

Using **RIDGID** trax with the SR-24

RIDGIDtrax enables basic underground utility mapping in real time. Connect an Android or iOS device wirelessly with Bluetooth to a RIDGID SR-24 Utility Locator and RIDGIDtrax will display GPS position and depth of the target utility. A user can identify the type of utility (water, gas, electric, etc.) and display multiple utilities on the same map. A finished map can be saved and viewed inside the app or exported to a .KMZ file for use with Google Earth®.


Visit www.RIDGID.com/SR-24 to download the app



Connecting Your SR-24

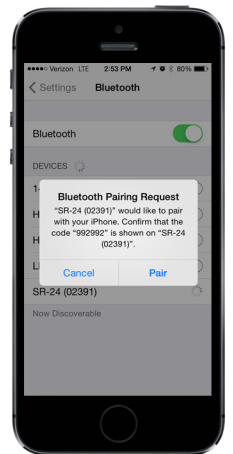
- 1 Turn on the SR-24.

Verify that no other devices are connected to the SR-24 if they were previously connected and still within range.

On your mobile device go to Bluetooth settings, find the device named "SR-24(serial#)". If prompted click the  button on the SR-24.



After a successful connection, the bluetooth indicator will appear.

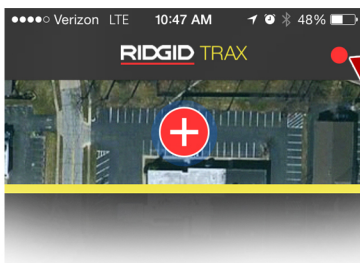
On subsequent uses the SR-24 will auto connect to your mobile device.

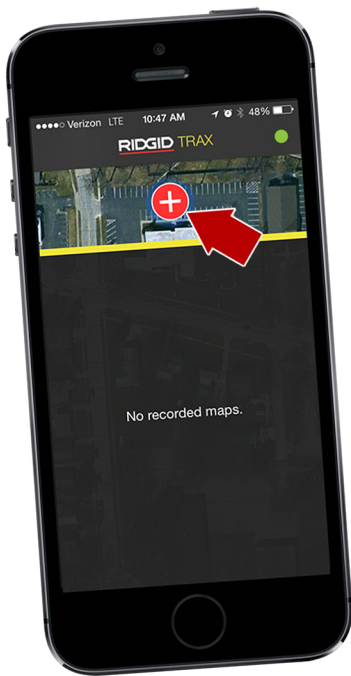


Bluetooth Indicator

Starting the App

- 2 Launch the RIDGIDtrax application and connect the SR-24 inside the app. Tap on the RED BUTTON at the top right of the app. Select the SR-24 you connected in Step One. On this screen you have the option to select feet or meters for depth. The red dot  will show green  when an SR-24 is successfully connected.

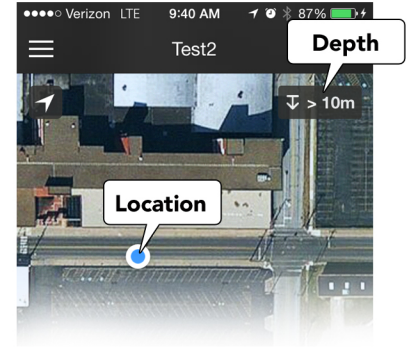




Creating a Map

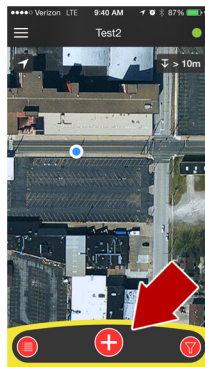
- 3 Press the red **+** button to start a new map.

You will need to enter a title and optionally a description. Tap the checkmark when you are done.

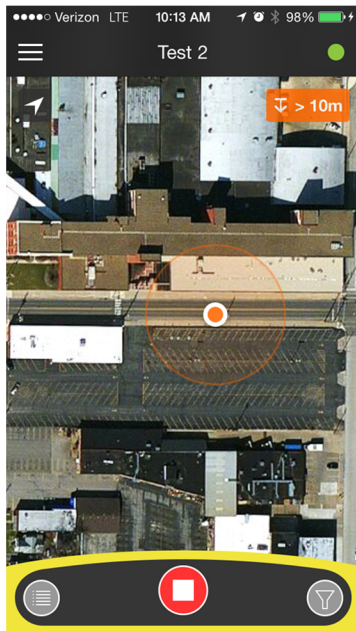
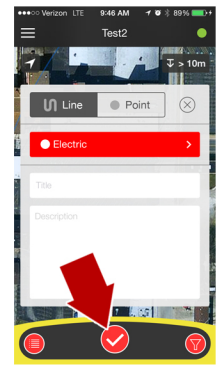


Recording Data

4



To start a new line/point within your map, tap on the **+** button at the bottom. Select "line" or "point" and choose a utility. You can enter a name and description also.





Tap the **✓** button to record a point or start a line. To end recording of a line, touch the **■** stop button.

Sharing Maps

- 5 The Map Menu icon on the iPhone **≡** and on Android **⋮** allows you to save, edit, share or delete your map. Sharing your map will open an email with a .kmz file attached for use within Google Earth®.

Controls at the bottom of the screen give you options to...

-  Show data points from your map
-  Filter saved points by utility type