

# C<sup>o</sup>MMERCIAL

## TANKLESS SOLUTIONS



The new degree of comfort.®

# Why Rheem® Commercial Tankless?



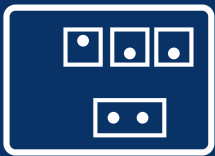
## DELIVERING ENERGY SAVINGS, FLEXIBILITY & SUPPORT

Introducing a dedicated water heating solution for businesses with all the Rheem tankless advantages, plus:

- Thermal Efficiency of up to 96%
- 11,000 - 199,900 BTU per unit
- Built-in maximum temperature setting of 185°F
- Common venting options for indoor natural gas models
- Manifold control models for expanding up to 3,998,000 BTU/h systems (20 units linked)
- Service valves included

Options for factory tested, pre-assembled systems

## Rheem Exclusive Advantages



### MANIFOLD CONTROL READY

Models with manifold control easily connect up to 20 units – in daisy-chain configuration – with no additional accessories needed.



### BUILT-IN CONDENSATE NEUTRALIZER

The acidic byproduct of combustion can corrode and damage pipes, but the built-in condensate neutralizer raises the pH of this condensate so it can be safely discharged into the drain.



### OVERHEAT FILM WRAP

This safety feature detects high temperatures in the heat exchanger and shuts the unit down – preventing damage and allowing industry best 1/2" side-to-side clearance.



### PPs VENTING

Rheem polypropylene venting options from Centrotherm are the only venting materials in the industry with UL-1738 and ULC-S636 certifications for flue temperatures of up to 230°F.



Rheem is proud to bring EcoNet WiFi control compatibility to our commercial tankless water heaters. Available via four accessory kits, EcoNet functionality enables businesses to minimize downtime with proactive maintenance alerts, while giving them more savings and control. Features include:

- Water **leak detection** and **auto system shut-off\***
- **Mobile alerts** for notifications & maintenance reminders
- Gas and water **usage reports**
- Integration with **Nest®** and **Wink®** smart systems
- Mobile Water **Temperature Control**

*\*Indoor models only.*

## ADDING ECONET WIFI TO RTGH-C95 MODELS (Standard Commercial Models)

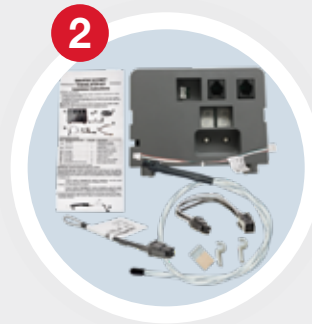


### EcoNet® Tankless Translator & WiFi Module Kit

#### REWRA630TWH

Contains all parts required to upgrade single Rheem tankless water heaters to have EcoNet connected features. For multi-unit systems, a Translator Kit is required for each additional unit.

*Includes translator kit, WiFi module kit and leak detection kit*



### EcoNet® Tankless Translator Kit

#### PD415188

Each tankless water heater requires a translator to work with EcoNet. Can be used in addition to Tankless Translator & WiFi Module Kit for multiple tankless unit installations.

*Includes translator, leak detection kit and connection cables*

NEED:

**One per System**  
(Installs in First Heater)



**One per Additional Heater**

## ADDING ECONET WIFI TO RTGH-CM95 MODELS (Commercial Models with included Manifold Control)



### EcoNet® Tankless WiFi Module Kit

#### PD415189

WiFi Module Kit can be used to upgrade Tankless systems already containing Manifold Translator. One WiFi Module is required for each tankless system, not per tankless unit.

*Includes WiFi module, connection cable and power cord*



### EcoNet® Leak Detection Kit

#### PD415190

Can be connected to built-in Manifold Translator in Commercial Tankless models to add leak detection features. Indoor models ONLY.

*Includes leak detection sensor and harness*

NEED:

**One per System**  
(Plugs into Translator of any Heater in System)



**One per Heater Indoor Models Only**

# Rheem® Commercial Series

## High Efficiency Tankless Gas Water Heating Solutions



**MAXIMUM WATER AND ENERGY SAVINGS,  
PLUS KEEPS INSTALL COSTS TO A MINIMUM**



### LOWER INSTALLATION COSTS

Allows for in-line or back to back common venting of up to 10 units and room air intake configurations.



### REDUCED DOWNTIME

Having multiple units working together creates redundancy, so if one tankless water heater goes down, your customer's business stays up and running.

<b>Thermal Efficiency</b>	Up to <b>96%</b>
<b>Venting Type</b>	Vents with <b>Schedule 40 PVC</b> or <b>PPs</b>
<b>Unit Dimensions</b>	<b>27-1/2" H x 18-1/2" W x 9-3/4" D</b>
<b>Unit Weight</b>	<b>82 lbs.</b>
<b>Warranty</b>	Heat Exchanger: <b>5 Years</b>
	Parts: <b>5 Years</b>
	Labor: <b>1 Year</b>
<b>Ultra Low NOx</b>	<b>All Natural Gas Models</b>
<b>High Altitude</b>	<b>Up to 8,400 ft.</b>

CONTROL UP TO  
**20**  
TANKLESS  
WATER HEATERS  
WITH NO ADDED  
ACCESSORIES

Description	Commercial Tankless	Commercial Tankless WITH Manifold Control
Indoor – Nat. Gas	RTGH-C95DVLN	RTGH-CM95DVLN
Indoor – LP Gas	RTGH-C95DVLP	RTGH-CM95DVLP
Outdoor – Nat. Gas	RTGH-C95XLN	RTGH-CM95XLN
Outdoor – LP Gas	RTGH-C95XLP	RTGH-CM95XLP





## INDOOR DIRECT VENT



## OUTDOOR



## SAVE TIME

- 1 PVC Venting Compatible**  
Vent individual units with 2", 3" and 4" PVC, saving time and money
- 2 Common Vent Compatible**  
Vent up to 10 units together to save space and reduce outside wall penetrations
- 3 Built-In Condensate Neutralizer**  
**Industry First!**  
Safely dispose of condensate without extra installation cost and time
- 4 Half-Inch Gas Line Compatible up to 24 ft.<sup>1</sup>**  
Saves money and time on installation to an existing system
- 5 Freeze Protection**  
**Industry Best!**  
Ceramic heaters on copper pipes protect from 40°F to -30°F, allowing outdoor installation

## INSTALL MORE

- 6 Overheat Film Wrap**  
**RHEEM EXCLUSIVE**  
Safety feature prevents dangerous temperatures allowing industry-best, 1/2" side-to-side clearance to combustibles
- 7 Low Flow Activation**  
**Industry Leading!**  
Minimum flow rate of .26 GPM and activation flow rate of .40 GPM ensures hot water in low demand situations
- 8 Six Stage Modulating Burner**  
Tight control over burner energy efficiency
- 9 EcoNet® Enabled**  
All models from 2010 to present can connect to EcoNet mobile app via Tankless EcoNet Accessory Kit (REWRA630TWH)
- 10 Manifold-Ready**  
Models with manifold control easily connect up to 20 units with no additional accessories required



<sup>1</sup> Based on Rheem testing of 1/2" gas line with gas supply of 7" w.c. up to 24'; Installation conditions vary; Consult the Rheem® Use and Care Manual, the Rheem® Gas Piping Facts brochure (TK-GPF-12), the National Fuel Gas Code (NFPA 54, ANSI Z223.1), and any other local gas codes when installing a Rheem Tankless Water Heater.

# Rheem® Commercial Tankless System

This custom-built solution arrives on the jobsite factory-assembled with single point connections including:

- RTGH-CM95 Condensing Tankless Water Heaters
- Factory installed system control manifold
- Pre-sized water and gas manifold
- Electrical wiring
- Condensate lines

## CONFIGURATIONS

- Wall mounted system
- Wall hung system
- Free-standing system

## SYSTEM OPTIONS

- 2-6 tankless units per system

## ENGINEERED SOLUTION BY RHEEM

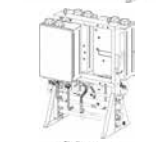
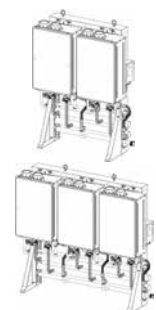
- Scalable from 11,000 BTU/h to 1,199,400 BTU/h in one system
- Multiple configurations
- Options for future expansion

## INSTALLATION SAVINGS

- Reduce installation costs with single point connections

COMING  
SOON





MODEL NUMBER	NUMBER OF UNITS	SYSTEM DESCRIPTION	FUEL TYPE	LAYOUT
WALL HANGING TANKLESS SYSTEM				
RTR-WH220DVLN	2-Units	Indoor Wall Hanging	Nat. Gas*	
RTR-WH220XLN	2-Units	Outdoor Wall Hanging	Nat. Gas*	
RTR-WH330DVLN	3-Units	Indoor Wall Hanging	Nat. Gas*	
RTR-WH330XLN	3-Units	Outdoor Wall Hanging	Nat. Gas*	
WALL MOUNT TANKLESS SYSTEM				
RTR-WM220DVLN	2-Units	Indoor Wall Mount	Nat. Gas*	
RTR-WM220XLN	2-Units	Outdoor Wall Mount	Nat. Gas*	
RTR-WM330DVLN	3-Units	Indoor Wall Mount	Nat. Gas*	
RTR-WM330XLN	3-Units	Outdoor Wall Mount	Nat. Gas*	
FREESTANDING TANKLESS RACK SYSTEM				
RTR-FS411DVLN	2-Units	Indoor Free Standing	Nat. Gas	
RTR-FS411XLN	2-Units	Outdoor Free Standing	Nat. Gas*	
RTR-FS420DVLN	2-Units	Indoor Free Standing	Nat. Gas	
RTR-FS420XLN	2-Units	Outdoor Free Standing	Nat. Gas*	
RTR-FS630DVLN	3-Units	Indoor Free Standing	Nat. Gas	
RTR-FS630XLN	3-Units	Outdoor Free Standing	Nat. Gas*	
RTR-FS421DVLN	3-Units	Indoor Free Standing	Nat. Gas	
RTR-FS421XLN	3-Units	Outdoor Free Standing	Nat. Gas*	
RTR-FS422DVLN	4-Units	Indoor Free Standing	Nat. Gas	
RTR-FS422XLN	4-Units	Outdoor Free Standing	Nat. Gas*	
RTR-FS632DVLN	5-Units	Indoor Free Standing	Nat. Gas	
RTR-FS632XLN	5-Units	Outdoor Free Standing	Nat. Gas*	
RTR-FS633DVLN	6-Units	Indoor Free Standing	Nat. Gas	
RTR-FS633XLN	6-Units	Outdoor Free Standing	Nat. Gas*	

\*These models offered in LP, switch N for P in model number.



# Commercial Tankless Venting

## COMMON VENTING SOLUTIONS

Up to ten Rheem® Commercial Condensing Tankless Water Heaters can be in-line or back-to-back common vented using Rheem polypropylene (PPs) header kits and extension pieces.

### Common venting saves space and materials while reducing outer wall penetrations.

Polypropylene is lightweight, assembles quickly, and doesn't require glues or solvents to connect. It also meets UL-1738 and ULC-S636 certifications.

**Note:** If heaters are common vented, you can still manifold up to 20 units in a bank, however, you must limit the venting cascade to 10 units.

### Easy to Install

- Gasketed, push-fit connection system installs quickly/easily – No glues, primers or solvents required
- Directional gasket and flow arrows ensure proper vent layout
- Connector ring installs where needed, in seconds ensuring UL-1738 & ULC-S636 compliance
- Venting parts can be field cut to length to meet any venting requirement

	Centrotherm PPs	PVC	CPVC
<b>Chemical Resistance</b>			
Aromatic Hydrocarbons	✓	X	X
Sulfuric Acid	✓	X	X
Hydrochloric Acid	✓	X	X
<b>UL Listed (0°F to 230°F)</b>	Listed	Not Listed	Not Listed
<b>Actual Working Temperature</b>	32°F (0°C) 248°F (120°C)	50°F (15°C) 149°F (65°C)	50°F (15°C) 194°F (90°C)
<b>Softening Temperatures</b>	302°F (150°C)	176°F (80°C)	200°F (93°C)
<b>Environmentally Friendly Production</b>	✓	X	X
<b>No Chloride Leaching</b>	✓	X	X
<b>Fully Recyclable</b>	✓	X	X

**Note:** Temperature values in table represent exhaust flue temperatures. For approximate max. water set point temperatures, subtract 20 degrees F.

PPS IS  
**28%**  
THE WEIGHT OF PVC  
THAT'S  
**77.8 LB  
LIGHTER**  
FOR 20FT OF  
8" TRUNK LINE!

### Tested and Approved by Rheem

- Tested and Listed by Intertek to UL-1738 & ULC-S636 for temperatures of -4°F to 230°F
- Zero clearance to combustibles in all applications
- All products are UV rated
- LEED friendly
- 100% Recyclable



Diameter	% of Centrotherm PPs weight vs. PVC	Weight Per Foot (lbs.)		
		Centrotherm PPs	PVC Sch. 40	CPVC Sch. 80
3"	23%	0.32	1.41	2.09
4"	33%	0.66	2.01	3.05
6"	40%	1.42	3.53	5.82
8"	28%	1.50	5.39	8.83
10"	27%	2.00	7.55	13.09

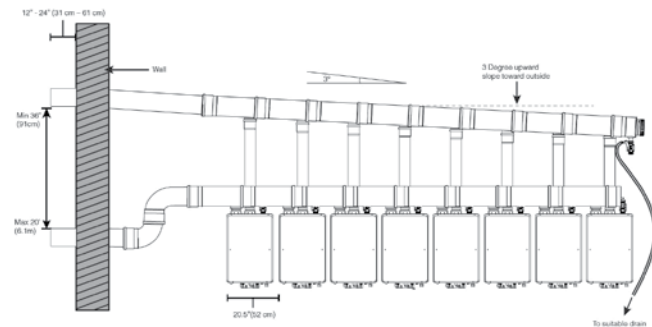




# Rheem® Commercial Tankless Common Venting

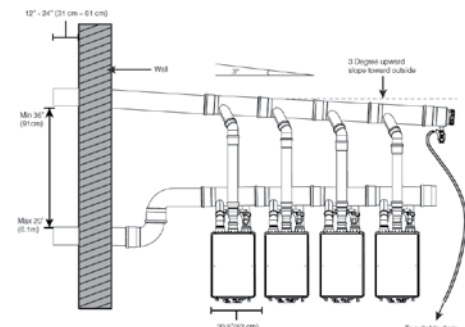
Header kits include all required venting pieces to connect multiple units. Additional vent run accessories are required to complete installation. Common venting header kits are available for inline or back to back installations, direct vent or room air intake options, using 6", 8" and 10" trunk diameters.

## INLINE HEADER KITS



Trunk Diameter	Number of units	Direct Vent Part No.	Room Air Part No.
6"	2	SP20906A	SP20907A
	3	SP20906B	SP20907B
	4	SP20906C	SP20907C
8"	2	SP20908A	SP20909A
	3	SP20908B	SP20909B
	4	SP20908C	SP20909C
	5	SP20908D	SP20909D
	6	SP20908E	SP20909E
	7	SP20908F	SP20909F
	8	SP20908G	SP20909G
10"	2	SP20910A	SP20911A
	3	SP20910B	SP20911B
	4	SP20910C	SP20911C
	5	SP20910D	SP20911D
	6	SP20910E	SP20911E
	7	SP20910F	SP20911F
	8	SP20910G	SP20911G
	9	SP20910H	SP20911H
	10	SP20910J	SP20911J

## BACK TO BACK HEADER KITS



Trunk Diameter	Number of units	Direct Vent Part No.	Room Air Part No.
6"	2	SP20912A	SP20913A
	3	SP20912B	SP20913B
	4	SP20912C	SP20913C
8"	2	SP20914A	SP20915A
	3	SP20914B	SP20915B
	4	SP20914C	SP20915C
	5	SP20914D	SP20915D
	6	SP20914E	SP20915E
	7	SP20914F	SP20915F
	8	SP20914G	SP20915G
10"	2	SP20916A	SP20917A
	3	SP20916B	SP20917B
	4	SP20916C	SP20917C
	5	SP20916D	SP20917D
	6	SP20916E	SP20917E
	7	SP20916F	SP20917F
	8	SP20916G	SP20917G

NOTE: Diagrams illustrate direct vent and horizontal exhaust. Room air intake and vertical exhaust configuration also available, but not pictured.

For more information, visit  
[Rheem.com/commercial-tankless](http://Rheem.com/commercial-tankless)

## VENT RUN ACCESSORIES

Image No.	Part Description	6"	8"	10"
1	Air Intake Branch Tee	SP20918AD	SP20918L	SP20918AE
2	87 Degree Elbow	SP20918BE	SP20918M	SP20918BM
3	45 Degree Elbow	SP20918BF	SP20918N	SP20918BN
4	Straight Pipe, 1'	SP20918BG	SP20918P	SP20918BP
5	Straight Pipe, 2'	SP20918BH	SP20918R	SP20918BR
6	Straight Pipe, 3'	SP20918BJ	SP20918S	SP20918BS
7	Straight Pipe, 6'	SP20918BK	SP20918T	SP20918BT
8	90 Degree Elbow Vertical Support	SP20918BL	SP20918U	SP20918BU
9	Bird Screen SS	SP20918AY	SP20918V	SP20918AZ
10	Tee Termination	SP20918BA	SP20918W	SP20918BB
11	Support Clamp	SP20918AW	SP20918AA	SP20918AX
12	Centrocerin Lubricant	SP20918H	SP20918H	SP20918H



# Rheem® Parts & Accessories

SEE  
TANKLESS  
PARTS  
& ACCESSORIES  
CATALOG FOR  
MORE

## NEW EZ-RACK™ KIT

RTG20304

- Easy wall mount or free-standing configurations
- Each EZ-Rack Kit holds 1-2 units
- Expands with additional kits to hold any number of units
- Assembles easily on the jobsite in under 10 minutes

Image depicts three EZ-Rack™ Kits mounted together. EZ-Rack™ Kits sold individually.



### Cosmetic Pipe Covers

These cosmetic pipe covers enhance the installation of the water heater and provides protection from tampering and weather.

- **RTG20227** - Fits RTGH Series Indoor or Outdoor Condensing Models
- **RTG20217DVG** - Fits RTG DV Series Indoor Tankless Models
- **RTG20217XG** - Fits RTG X Series Outdoor Tankless Models



### Outdoor Recess Box

These allow you to mount an outdoor tankless into the wall, flush with the outside of the home. They are weather resistant and can be locked for security.

- **RTG20226** - Fits RTGH X Series Outdoor Condensing Models
- **RTG20218** - Fits RTG X Series Outdoor Tankless Models
- **RTG20253** - For Stucco Applications - Fits RTGH X Series Outdoor Condensing Models



### Flush Kit

The Tankless Flush Kit connects to the service valves for an easy way to flush and de-scale your tankless water heater.

- **RTG20214** - Includes pump, hoses and 5-gallon bucket



### AllClear™ Water Treatment System

Combat hard water and scale build up for use with 1-2 unit systems.

- **RTG20251** - AllClear™ Water Treatment System
- **RTG20252** - Replacement Cartridge



### Service Valves (Included )

Webstone®-Brand Tankless Service Valves

- **RTG20220AB** - Clean Brass for Low Lead Code - Includes cold and hot water set and pressure relief valve



### Condensate Neutralizer

- **SP12151** - External Condensate Neutralizer Accessory With PVC connections
- **AP16770** - Replacement Rocks for Condensate Neutralizer
- **RXGY-A01** - External Condensate Neutralizer Accessory with flex tubing connections



### RJ25 Communication Cables

- **RCPN-AMP03-0013111101-0002** - 72 in. Long
- **RCPN-AMP03-0013111101-0003** - 48 in. Long
- **RCPN-AMP03-0013111101-0004** - 240 in. Long

## PROTECH®



### Protech™ Service Kit

Designed with the contractor in mind, provide all the basic parts necessary for a complete repair of a Rheem tankless gas water heater.

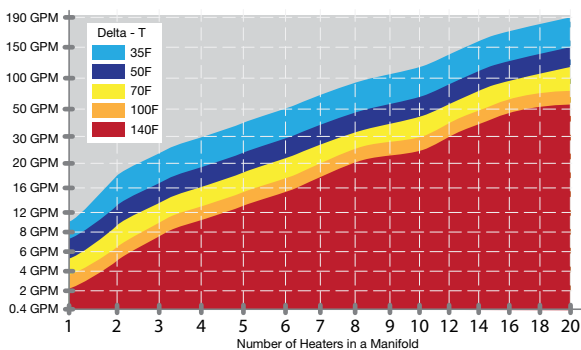
- **PROTECH PD966351** - Condensing Models

# Tankless Multi-Unit Flow Rates

By manifolding up to twenty commercial tankless water heaters together in a system, businesses can produce up to 190 gallons of hot water per minute. Use the chart below to determine the expected gallons per minute (GPM) based on the number of units connected and temperature rise requirements.

Manifold QTY	Total System BTU based on 199,900 Btu per Unit	Total System Gallons Per Minute (GPM) - Per Temperature Rise (ΔT)											
		35	45	50	60	70	77	80	90	100	110	120	140
1	199,900	9.5	8.4	7.5	6.3	5.4	4.9	4.7	4.2	3.8	3.4	3.1	2.7
2	399,800	19.0	16.7	15.0	12.5	10.7	9.8	9.4	8.4	7.5	6.8	6.3	5.4
3	599,700	28.5	25.1	22.5	18.8	16.1	14.6	14.1	12.5	11.3	10.2	9.4	8.1
4	799,600	38.0	33.4	30.1	25.1	21.5	19.5	18.8	16.7	15.0	13.7	12.5	10.7
5	999,500	47.5	41.8	37.6	31.3	26.8	24.4	23.5	20.9	18.8	17.1	15.7	13.4
6	1,199,400	57.0	50.1	45.1	37.6	32.2	29.3	28.2	25.1	22.5	20.5	18.8	16.1
7	1,399,300	66.5	58.5	52.6	43.8	37.6	34.2	32.9	29.2	26.3	23.9	21.9	18.8
8	1,599,200	76.0	66.8	60.1	50.1	42.9	39.0	37.6	33.4	30.1	27.3	25.1	21.5
9	1,799,100	85.5	75.2	67.6	56.4	48.3	43.9	42.3	37.6	33.8	30.7	28.2	24.2
10	1,999,000	95.0	83.5	75.2	62.6	53.7	48.8	47.0	41.8	37.6	34.2	31.3	26.8
11	2,198,900	104.5	91.9	82.7	68.9	59.1	53.7	51.7	45.9	41.3	37.6	34.4	29.5
12	2,398,800	114.0	100.2	90.2	75.2	64.4	58.6	56.4	50.1	45.1	41.0	37.6	32.2
13	2,598,700	123.5	108.6	97.7	81.4	69.8	63.4	61.1	54.3	48.9	44.4	40.7	34.9
14	2,798,600	133.0	116.9	105.2	87.7	75.2	68.3	65.8	58.5	52.6	47.8	43.8	37.6
15	2,998,500	142.5	125.3	112.7	94.0	80.5	73.2	70.5	62.6	56.4	51.2	47.0	40.3
16	3,198,400	152.0	133.6	120.3	100.2	85.9	78.1	75.2	66.8	60.1	54.7	50.1	42.9
17	3,398,300	161.5	142.0	127.8	106.5	91.3	83.0	79.9	71.0	63.9	58.1	53.2	45.6
18	3,598,200	171.0	150.3	135.3	112.7	96.6	87.9	84.6	75.2	67.6	61.5	56.4	48.3
19	3,798,100	180.5	158.7	142.8	119.0	102.0	92.7	89.3	79.3	71.4	64.9	59.5	51.0
20	3,998,000	190.0	167.0	150.3	125.3	107.4	97.6	94.0	83.5	75.2	68.3	62.6	53.7

Tankless Multi-Unit Flow Rate Curve



## H<sub>2</sub>AC™ Rooftop Unit Featuring eSync™ Integration Technology

Our Integrated Air & Water System is the first and only system of its kind—and available exclusively from Rheem. Our eSync™ Integration Technology brings a new level of savings and efficiency to full-service restaurants and other businesses by using heat that is normally rejected into the atmosphere to heat water.

With the highly efficient Integrated Air and Water System, you will experience:

- Lowest cooling and water heating operational costs available
- Up to 50% savings on your annual water heating costs
- Up to 20% savings on your annual energy costs
- Less than a two-year payback
- Reduced energy footprint
- System contributes to your environmental initiatives
- One-source provider for air and water solutions
- Trusted Rheem quality and reliability

Visit [www.rheem.com/h2ac/](http://www.rheem.com/h2ac/) for more information.





# Sizing Solutions



## SIZE IT YOURSELF WITH EZ-SPEC™

Regardless of the commercial application, our advanced and highly accurate EZ-Spec™ Tankless sizing tool can assist in choosing the right model, number of units and accessories needed for a tankless installation.

## GET IT SIZED BY RHEEM®

Rheem Applications Engineers offer professional sizing and selection services. Provide project details and let our engineers deliver a personal consultation to help with the perfect water heating solutions for commercial projects. Our Tankless Support Team and Applications Engineer are available to support sizing requests and troubleshooting.

## Rheem Partnership

### ONE-STOP COMMERCIAL SHOP, DEDICATED SUPPORT SERVICES

Count on Rheem Commercial for dedicated, personalized service and system solutions to meet all your business customers' water heating needs. Our Applications Engineers, sales and service teams are true partners committed to providing concierge-level service for all commercial applications. We also offer easy access to product specs, Revit® files, piping diagrams and more online. For questions, call our Tankless Support Team at 1-866-720-2076.



## CONTACT US

Customer Service, Warranty, Parts.....800-621-5622  
Tankless Support.....866-720-2076  
Technical Service..... 800-HEATER3  
(800-432-8373)

Visit us online at **[rheem.com/commercial-tankless](http://rheem.com/commercial-tankless)**  
or see your local distributor.

All Rheem Tankless Water Heaters meet or exceed ANSI requirements and have been tested according to D.O.E. procedures. Units meet or exceed the energy efficiency requirements of NAECA, ASHRAE, standard 90, ICC Code and all state energy efficiency performance criteria. All units meet or exceed SCAQMD rule 1146.2 for California Emission Requirements.

*In keeping with its policy of continuous progress and product improvement, Rheem reserves the right to make changes without notice.*



LEED Points = 2

C JAPMO UNIFORM PLUMBING CODE