

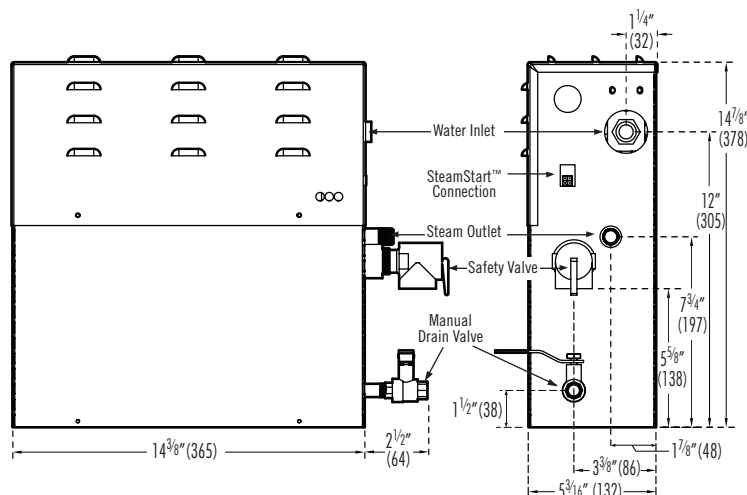
Model SAH3000, SAH4500, SAH6000

Mr.Steam Standard Features

- Ideal for starter homes and guest baths
- Ideal for ceramic, porcelain, glass tiles & acrylic enclosures
- Rugged stainless steel generator with electronic printed circuit board available in 208V or 240V 1 Phase
- Uses less than one gallon of water for a 20-minute session
- 23% more compact than standard MS steam generators
- Integral safety time-out feature
- Built-in drain valve
- Made in the USA

Safety Features

- Built-in, low-voltage 24-volt control
- ASME safety valve
- 60-minute electronic countdown shutdown with 75-minute limiting safety back-up



Locating & Installing the Steam Generator Unit

- Select a location as near as practical to the steam room, within 60 feet. Typical locations include: closet, vanity cabinet, heated attic or basement
- Do not install steambath generator inside the steam room.
- Do not install steambath generator outdoors or wherever environmental conditions may affect the safety and/or performance of the generator
- Do not install steambath generator or plumbing lines in unheated attic or any locations where water could freeze
- Do not install steambath generator near flammable or corrosive materials or chemicals or in areas having a high concentration of chlorine
- Install steambath generator on a solid and level surface or securely mounted to a wall using the keyhole slots provided
- Install steambath generator in an upright position only
- Provide a minimum of (12) inches at both ends and top of the steam generator or as required for servicing
- Provide unions as required to facilitate installation and disconnection of the steam generator

Required Plumbing

Steam Outlet (1/2" NPT)

Drain (1/2" NPT)

Water Supply (3/8" NPT)

Safety Valve (3/4" NPT)

Steam Head (1/2" NPT)

FOR ILLUSTRATIVE PURPOSES ONLY. IMPORTANT NOTE: FOR SAFE AND TROUBLE FREE INSTALLATION visit mrsteam.com to download the Installation, Operation and Maintenance Manual or refer to the manual provided with the unit.

Electrical

All electrical wiring to be installed by a qualified licensed electrician in accordance with National Electrical Code and local electrical code.

Power Wiring

1. Check power voltage. Use 240V rated unit when supply matches rating of unit before installation.
2. Use minimum 90° C/300 V rated insulated copper conductors only, type THHN or equal sized in accordance with National Electrical Code and local electrical code for the Amps in Ampere Chart. If allowed by code, NM cable may require a larger wire size than as listed on the chart.
3. Connect suitably sized equipment grounding wire to ground terminal provided.
4. Install a separate circuit breaker between supply and unit. Provide a power supply disconnect within sight of the steam generator or one that is capable of being locked in the open position.

AMPERE CHART

MODEL NO.	MAX ROOM VOL. CU.FT.	KW	VOLTS 1 PH	PHASE	AMPS	WIRE SIZE (AWG)*
SAH3000	65	3.0	208	1	15	12
			240	1	13	12
SAH4500	100	4.5	208	1	22	10
			240	1	19	10
SAH6000	150	6.0	208	1	29	8
			240	1	25	8

* for up to 45°C ambient

MODEL	VOLTAGE*	PROJECT INFORMATION	
<input type="checkbox"/> SAH3000	<input type="checkbox"/> B=208	Location:	Contractor:
<input type="checkbox"/> SAH4500	<input type="checkbox"/> C=240	Architect	Submitted By:
<input type="checkbox"/> SAH6000		Engineer	Date:
*Steam@Home units are only available in single phase			
Notes:			

Optional Equipment: AudioWizard, ChromaSteam, Recessed Light, MS Light, MS Wallseat, Condensation Pan